



Rynfield Primary School



ACADEMIC INFORMATION



The School with Heart 



INDEX:

1. General School Information
2. Composition of Classes
3. Assessments
4. Homework
5. Progression
6. Reports
7. Prize Giving and Honours Evening
8. Professional Support



GENERAL SCHOOL INFORMATION

STREET ADDRESS:

9 Malherbe Street, Rynfield, Benoni

POSTAL ADDRESS:

P.O Box 12265, Benoryn 1504

TELEPHONE NUMBER:

(011) 849 5215 / (011) 849 5216

E-MAIL ADDRESS:

mail@rps.org.za

WEBSITE:

www.rps.org.za

SOCIAL MEDIA:

FACEBOOK:

@RynfieldPrimarySchool

INSTAGRAM:

@rynfieldprimary

D6 COMMUNICATOR:

www.d6communicator.com



THE SCHOOL WITH HEART

SCHOOL MOTTO:

Respect • Perseverance • Success

SYNONYMOUS WITH HEART, SPIRIT, CHARACTER AND COURAGE

OUR VISION:

To create a balanced, educational environment in which our learners have the opportunity to realise their potential – academically, spiritually, socially and physically, in a school offering top class facilities and which inspires learners to lead a life of significance.

OUR MISSION:

- ✓ To offer a dedicated, qualified and caring staff.
- ✓ To encourage and appreciate an involved and supportive parent body.
- ✓ To promote a loyal and happy learner community.
- ✓ To provide a solid education foundation.
- ✓ To ensure sound teaching and learning prevails.
- ✓ To be a school which embraces a functioning value system and upholds respect for all.



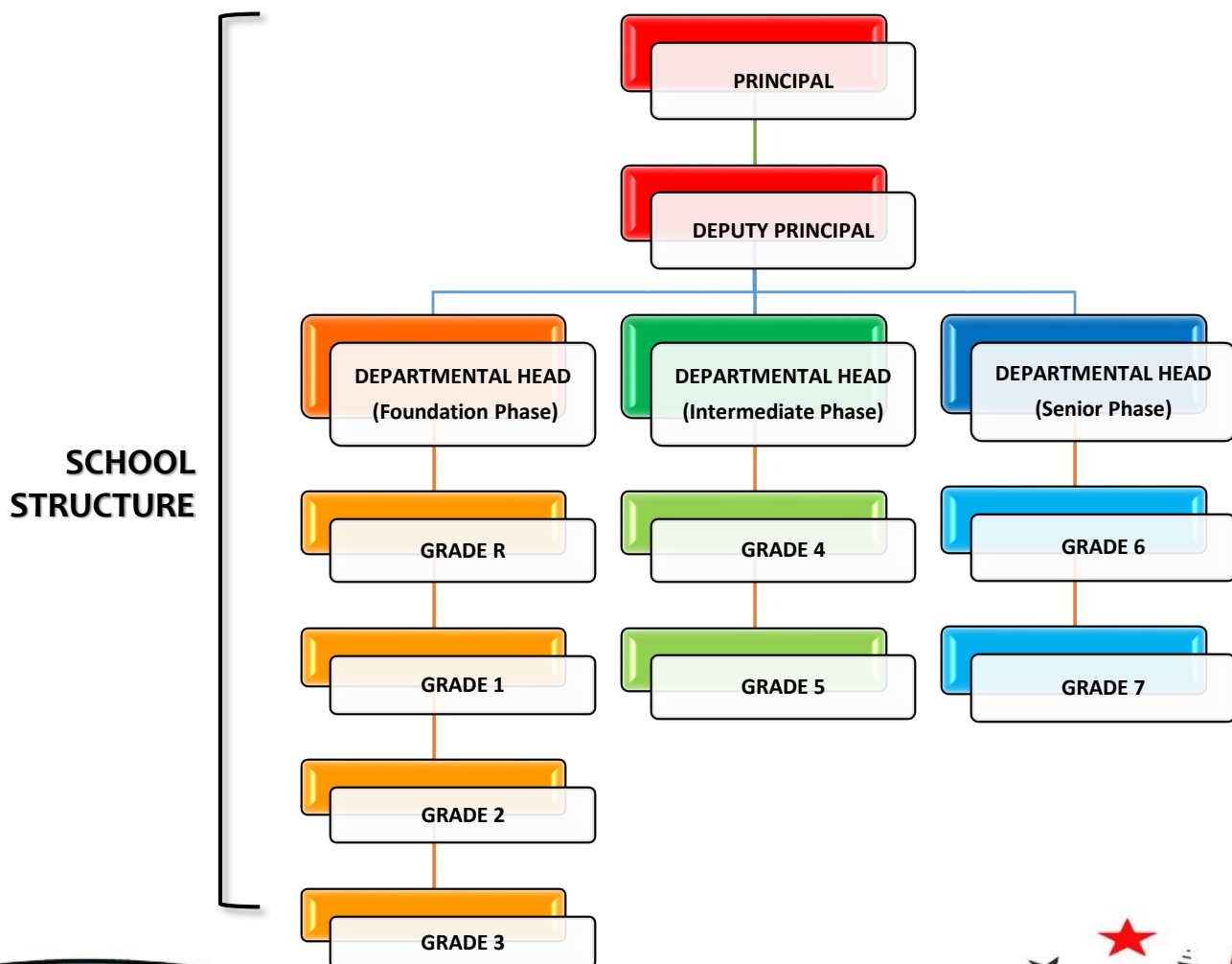
PRINCIPALS AND THE SCHOOL:

Past:

- Mr L.A. Valentine (1958 – 1975)
- Mr J.P. Forster (1976 - 1993)
- Mrs M. Palmer (1993 - 1998)
- Mr P.C.J. Erasmus (1998 - 2009)

Current:

- Mrs L. Cuthbertson (2010 – to date)





Rynfield Primary School offers a dedicated and professional staff and strives and is accountable and responsible, for the holistic and quality education of learners. Learners are expected to approach their schoolwork in a positive manner. It is equally important that parents provide the necessary encouragement and support.

COMPOSITION OF CLASSES

The classes consist of heterogeneous groups of learners. This means that a full spread of ability ranges – from academically weak to good learners – is found in every class. This method of grouping is followed because it challenges all learners to do their best and work with and accept peers with different abilities.

ASSESSMENTS

All the learners in the school are assessed on a continuous basis throughout the year. Thus, every piece of work, whether an oral, formal / informal project or assignment, is of vital importance. Learners need to work consistently in order to gain maximum benefit from continuous assessment (SBA).

- **GRADE R:** Assessment in Grade R is a 100% formative assessment and is integrated.
- **FOUNDATION PHASE:** Learners are assessed on the 1 – 7 point scale: 1 being that the learner has not achieved the minimum requirement for the subject and 7 being for outstanding / excellent achievement within the subject. The term report will not reflect percentages in the Foundation Phase.
- **INTERMEDIATE PHASE:** This phase covers Grades 4 , 5 and 6. Learners are assessed on a 1 – 7 point scale and the criteria are as for the Foundation Phase.
- **SENIOR PHASE:** Learners have all their work assessed on a 1 – 7 point scale. This includes classwork, assignments, projects and orals. Tests and exams form an integral part of the term's assessment. Evaluation will thus never be solely based on an exam or test. Instead it will be part of a series of marks collected during the term. Parents will therefore realise that every piece of work done by the learners is important. Learners' skills, knowledge and values are assessed on a continuous basis, providing a true reflection of their overall potential. **This phase covers Grade 7.**



HOMework

Homework is the responsibility of the learner. Homework is set for the learners to revise work done or to prepare for future lessons. Homework plays an important part in the learning process and it is essential that the parent takes an active interest in the child’s homework.

The homework each day is set out in the child’s diary and the **parent is requested to sign the daily entry**, indicating that the homework has been completed and checked. Parents are requested to ensure that the learners arrive adequately prepared for the school day. No interruptions will be tolerated with regards to parents dropping off homework left at home, or forgotten lunches / items.

PROGRESSION

The academic work is divided into specific subjects. Every learner is required to master the work prescribed for each subject. Where a learners is a cause for concern due to lack of progression, the class teacher will inform the parents as soon as possible in the academic year. As a matter of courtesy, we believe parents should consult, or at least inform the school before taking their child to any outside agency for evaluation or remediation.

| PROMOTION REQUIREMENTS | | |
|------------------------|----------------------------------|----------------------------|
| GRADES 1 - 3 | GRADES 4 - 6 | GRADE 7 |
| English: Level 4 | English: Level 4 | English: Level 4 |
| Afrikaans: Level 3 | Afrikaans: Level 3 | Afrikaans: Level 3 |
| Mathematics: level 3 | Mathematics: level 3 | Mathematics: level 3 |
| | Level 3 in any other 2 subjects. | Level 3 in any 3 subjects. |
| | | Level 2 in any 2 subjects. |



REPORTS

The School issues detailed reports during the year showing the academic progress made by each learner. In the Intermediate and Senior Phase, parents are expected to sign and return the slip attached to the report, acknowledging receipt thereof. Reports may be downloaded and printed by parents on the EdAdmin Portal.

PRIZE GIVING & HONOURS EVENING

Ceremonies are held annually, during November, for Grades 4 – 7 classes. Awards are based on learner's academic achievements during the year. The Grade 4 and Grade 5 ceremonies will take place on one day, with the Grade 6 and Grade 7 ceremonies taking place on the following day.

PROFESSIONAL SUPPORT

- a. The School provides a qualified Learner Support teacher to assist learners, from Grade 1 to Grade 3, who need remediation. As there is a limit to this service, only those learners who show extreme variances within areas of English will be accommodated.
- b. The School also avails itself to the service of well-qualified and experienced therapists to assist parents / learners when the need arises.
- c. All Grade 1 learners will be screened within the first term of the year for sight, speech and hearing.

Respect • Perseverance • Success

